

# World FENCE News

SEPTEMBER  
2010

Celebrating our 26th year of publication • Be sure to visit us online at [www.worldfencenews.com](http://www.worldfencenews.com)

## Beautiful exterior turns “monster garage” into a work of art

*This spectacular chain link screening was installed on the huge concrete structure comprising the 1.8 million square foot Consolidated Rent-A-Car (ConRAC) facility located at Norman Y. Mineta International Airport in San Jose, California.*



**This is not your everyday chain link fence job!**

North American Fence and Supply Co., Inc. (NAFCO) of Oakland, California utilized chain link screening to create a beautiful exterior treatment for a new parking structure at Norman Y. Mineta International Airport in San Jose, California. The strikingly original use of chain link helped turn a gigantic building into a public work of art.

The screening was installed on a huge concrete structure comprising the 1.8 million square foot Consolidated Rent-A-Car (ConRAC) facility located across from the newly-completed Terminal B. The structure included the placement of 3,663 pieces of precast and more than 70,000 cubic yards of concrete.

The \$231 million “monster garage” is part of the Terminal Area Improvement Program (TAIP), a major renovation and upgrade to the

San Jose International Airport.

The project consisted of a seven-story parking structure with 3,350 stalls, an adjacent and attached four-story Quick-Turn-Around (QTA) facility, and two seven-story helices for vehicle entry and exit.

A 30,000 square foot Customer Service Building (CSB) complete with high-end finishes such as terrazzo, carpet, automated glass entry doors, aluminum rolled ceilings and custom millwork is located on the ground level. In addition, a perforated metal panel and truss system with 3/8” mini mesh backlit with blue LED lighting has been designed for the west façade.

The east façade of the building is layered with both 2” x 9 gauge chain link fabric and 3/8” x 9 gauge mini mesh fabric system that incorporates a public artwork project showing



*Shown at top is the east façade of the ConRAC building, which is layered with both 2” x 9 gauge chain link fabric with inserted white plastic “pixels” and 3/8” x 9 gauge mini mesh fabric to create a public art project showing dozens of waving hands. Above is the west façade, which incorporates 3/8” mini mesh backlit with blue LED lighting. (Photos courtesy North American Fence and Supply Co.)*

dozens of waving hands.

As you might imagine, this project did not happen overnight. Many months of advance planning and preparation were required.

According to NAFCO operations

manager Michael Swaney, who served as senior project manager, “We found a place about 65 miles away at a cattle ranch where the owner agreed to loan us one of his

*continued on page 30*

## INSIDE THIS ISSUE OF WORLD FENCE NEWS

**Fencer’s Field Report • Construction starts drop in two of three main sectors**  
**Effective business plan puts goals into words, by Tom Luby • Profiting from social media**  
**New federal paperwork requirement could be a bookkeeping nightmare, part 2, by Jim Lucci**



# Harrison Products

Quality Stainless Steel Products

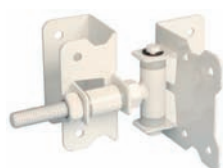
PO Box 540606, North Salt Lake, UT 84054-0606  
Phone: 801-294-6532 — Mobile: 801-558-1410  
Fax: 801-295-5862  
E-mail: t.a.harrison@comcast.net

[www.HarrisonProducts.biz](http://www.HarrisonProducts.biz)

## 2010 PRODUCTS

- Most Available in Black, White, or Tan • Powder Coated
- Mounting Screws Included
- East Directional Interchange on Latches
- Sold by the Case (Hinges & Latches 12/Case, Drop Rods 6/Case)
- Latches are Padlockable & Hinges are Adjustable
- Competitive Shipping • VISA & MasterCard

### 1¾-Inch U-Shaped Hinge



#### 025-UH Series Stainless Steel:

1-10 Cases: \$18.95/set,  
11+ Cases: \$17.95/set

**Z25-UH Series Rust-resistant  
Zinc Plated Steel: \$13.65/set**

**A24-L Series Aluminum: \$13.65/set**

### Small Latch & Striker



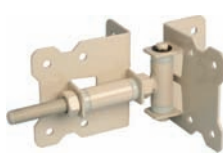
#### 026-L Series Stainless Steel:

White & Black

1-10 Cases: \$11.95 ea,  
11+ Cases: \$10.95 ea

**Z26-L Series Rust-resistant  
Zinc Plated Steel: \$7.75 ea**

### L-Shaped Hinge



#### 024-LH Series Stainless Steel:

1-10 Cases: \$18.95/set,  
11+ Cases: \$17.95/set

**Z24-LH Series Rust-resistant  
Zinc Plated Steel: \$13.65/set**

**A25-U Series Aluminum: \$13.65/set**

### Medium Latch & Striker



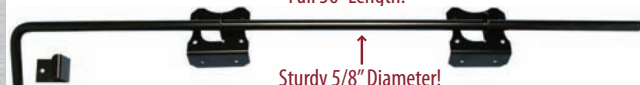
#### 028-L Series Stainless Steel:

1-10 Cases \$14.95 ea,  
11+ Cases \$13.95 ea

**Z28-L Series Rust-resistant  
Zinc Plated Steel: \$8.95 ea**

Full 36" Length!

Sturdy 5/8" Diameter!



### Drop Rods

**027-DR Series Stainless Steel: \$19.95 ea**

**Z27-DR Series Rust-resistant**

**Zinc Plated Steel: \$13.75 ea**

### Large Latch & Striker



#### 031-L Series Stainless Steel:

1-10 Cases \$15.95 ea,  
11+ Cases \$14.95 ea

**Z31-L Series Rust-resistant  
Zinc Plated Steel: \$10.75 ea**



### HEAVY-DUTY, Self-Closing Hinges

- Adjustable tension & vertical placement
- For gates weighing up to 140 lb
- For large or heavy vinyl/wood gates
- No Rust, bind, sag or stain

**Black: HDAH-1 \$35.00/set**



### GATE ACCESSORIES

#### GATE HANDLE

Black: LLHBG \$3.90/ea  
White: LLHBGWT \$3.95/ea

#### GATE STOP

Black: TCGS1 \$9.10/ea  
White: TCGS1WT \$9.10/ea

1.5" (38mm)



**MAGNA-LATCH**  
MAGNETIC SAFETY GATE LATCH

### MAGNA-LATCH® Magnetic Safety Gate Latch

- Meets most Pool Safety Codes
- Quick & easy to install
- Adjusts vertically & horizontally
- Key lockable convenience
- Patented magnetic triggering

Black: MLTPS2BGA \$51.75/ea  
White: MLTPS2WTBGA \$54.10/ea

### LOKK-LATCH® Series 2 General Purpose



- Built-in key lock
- No rust or corrosion
- Fits up to 2" gate gaps
- One model fits all materials
- Affordable, locking latch

Black: LLAAB (Kit) \$32.55/ea  
White: LLAABW (Kit) \$35.20/ea

**LOKK-LATCH Series 2**

### LOKK-LATCH DELUXE® Privacy & Security

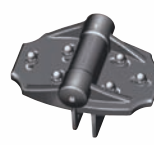


- Locks & operates both sides of gate
- Requires only one drilled hole
- Can be keyed-alike to most doors
- Sturdy 6-pin security lock
- Adjusts vertically & horizontally

Black: LLDAB \$60.90/ea  
White: LLDABW \$65.77/ea

**LOKK-LATCH DELUXE**

### TRU-CLOSE® HEAVY DUTY, Self-Closing Hinges



- Adjustable tension & placement
- For large or heavy vinyl/wood gates
- No rust, bind, sag or stain
- Super-strong polymer construction
- For gates weighing up to 132 lb

Black: TCHDMA1 \$52.95/per set  
White: TCHDMA1WT \$56.25/per set

**TRU-CLOSE**  
ADJUSTABLE, SELF-CLOSING GATE HINGES

### TRU-CLOSE® Adjustable, Self-Closing Hinges



- Quick & easy to install
- No rust, bind sag or stain
- Super-strong polymer construction
- For gates up to 55 lb, loads up to 450 lb
- Patented tension adjustment

Black: TCAMA2 \$39.25/per set  
White: TCAMA2WT \$42.60/per set

**TRU-CLOSE**  
ADJUSTABLE, SELF-CLOSING GATE HINGES

### Chain link work of art

continued from page 1

pens for a couple of months. We built a mock up in July of 2008. We installed 2" x 9 gauge, 2" x 6 gauge, 3/8" x 11 gauge and 3/8" x 9 gauge, all 12' high rolls, on a frame 18' high x 48' long incorporating a radius section to match the end of the QTA in order to make sure the fabric would not 'tin can.' You have to realize that the fabric is hanging vertically, not horizontally as it usually would," said Swaney.

"After completion of the mock up we had meetings at the jobsite with the construction management firm, Hensel Phelps Construction Company, the City of San Jose, and with the artist, Christian Moeller, in order to get final approval for what was to be installed," he said.

It was agreed to use 9 gauge for both the 2" and the 3/8".

In November of 2008 NAFCO was awarded the contract to supply and install approximately 150,000 square feet of 3/8" 9 gauge mini mesh and 77,592 square feet of 2" 9 gauge.

"The San Jose International Airport job was the largest project ever attempted by NAFCO, and the staff at the Merchants Metals Hayward, Calif. office, including Jonathon, John and Rick, was there to help us every step of the way. They manufactured all of the 2" x 9 ga. fabric and 3/8" x 9 ga. mini mesh and supplied all of the 6-5/8" pipe, tension bands and tension bars we needed to complete this massive job. Their attention to detail and on-time delivery at pre-arranged intervals helped us to keep everything on track," Swaney said.

Custom fabricated mounting brackets made from ½" steel plate were mounted on the face of the parking structure using stainless steel ¾" x 5-½" Hilti expansion anchors (3,300) and 7,000 lineal feet of 6-5/8" Schedule 40 galvanized pipe. The project also used 115,000 pounds of ½" plate which had to be galvanized after fabrication.

Equipment utilized on this project were two 105' telescoping lifts, two 85' telescoping lifts, two 40' articulating lifts, a 30 ton R/T crane, a Bobcat T190 and two flat bed trucks in order to move material from its hanger site to the job site. The 2" mesh fabric was delivered to the jobsite in early April 2009 so the installation of the white plastic pixels which create the hands could proceed.

The Carlson Co. out of Southern California designed and built two machines specifically for the proper

continued on page 81

An Authorized D&D Distributor  
See the full product line at [www.HarrisonProducts.biz](http://www.HarrisonProducts.biz)



**Chain link work of art***continued from page 30*

**Special jigs were constructed to facilitate the precise placement of the more than 750,000 white plastic pixels that create the "hands" effect.**

*(NAFCO photos)*

**Left to right, NAFCO crewmen Juan Jose Amezcua and Juan Lopez trim the hanging chain link fabric.**

**Profiting from social media***continued from previous page*

many more by searching the Internet for "twitter apps."

**Facebook**

As the accompanying story suggests, Twitter has become a hot marketing tool for businesses looking to communicate with customers new and old.

But don't overlook Facebook, a social medium with a web presence that can leverage the effort you invest in Twitter. Indeed, many of your Tweets can include links that lead customers directly to your Facebook page, maximizing your sales effort.

Facebook ([www.facebook.com](http://www.facebook.com)) has over 400 million users, about 70 percent of whom reside outside the United States in 15 countries. It enjoys a three percent weekly growth rate. The fastest growing age group is over 25.

You can get the ball rolling by signing up for your own free Facebook account at [www.facebook.com](http://www.facebook.com). Then search for the names of other businesses to see how they have built their own Facebook presence. What characteristics of their Facebook pages will work for your own presence? How can you improve on what they have done?

Then start to create a large personal network of participants in your Facebook effort. The bigger your network the more potential. You will be able to post messages to get people enthused about visiting your store.

placement of the 750,000+ pixels.

On June 15 NAFCO crews mobilized to the job site with a crew of five laborers, two ironworkers and one operating engineer and began installing the chain link fabric.

The fabric was installed using 6-5/8" tension bands on the 6-5/8" horizontal pipe. All the tension bands were "nailed" using a powder actuated gun to keep them from twisting to the center, as were the pipes, which were bolted.

"Needless to say, since this type of project had never been done before, it was an extreme and steep learning curve for both the men and me," said Swaney.

During the six plus months of planning for this project it was

*continued on next page*

**BUSHWICK**  
METALS INC.

**FISHER BROS.**  
CO.

**AZCO**  
STEEL COMPANY

A Division of Bushwick Metals, Inc.

A Division of Bushwick Metals, Inc.

[www.bushwickmetals.com](http://www.bushwickmetals.com)



**Complete line of Carbon and Stainless Products**

Bridgeport, CT  
Phone: 800-221-0340  
Fax: 203-330-9578

Great Neck, NY  
Phone: 888-287-4942  
Fax: 516-482-0808

Englewood, NJ  
Phone: 800-631-1543  
Fax: 201-567-9530

Richboro, PA  
Phone: 800-221-7781  
Fax: 215-364-2612

**Your Metals Partner  
for Fencing and  
Guard Rail Products**

- Galvanized Pipe
- Fence Tube
- Galvanized Squared Tube
- Guard Rail
- Stainless Pipe and Tube

**MORE RESOURCES.  
MORE TRAINING.  
MORE KNOW-HOW.**

**G**etting more training and more know-how is what membership in the American Fence Association is all about. With a broad range of educational opportunities, professional certification programs, and business management strategies, AFA offers its members the programs and know-how to build a more profitable business.

In addition, AFA provides its members with useful tools, resources and business partnerships to help save both money and time for your company.

Join AFA today and start getting more for your business.

**AFA American  
Fence  
Association**



**Join now and get AFA Bucks.  
Fifty more reasons to join AFA.**

[www.americanfenceassociation.com](http://www.americanfenceassociation.com) • 1.800.822.4342



### Chain link work of art

*continued from previous page*

always NAFCO's intent to have a small 6 ton carry deck crane on the roof, since it was clear and it kept a piece of equipment out of the way because the job site was very congested, he noted. "Three days before mobilization we were notified that the crane was too heavy and I would have to use a smaller one," said Swaney. "Unfortunately, the smaller crane just was too small to be of any use so we ended up using a 30 ton rough terrain mobile crane."

As you might imagine, a project

of this magnitude required the intense efforts of a number of people. Swaney said the following individuals deserve credit for the successful completion of the job:

- The construction management team of Hensel Phelps Construction Co., consisting of project manager Jeff Fredricksen, lead estimator Jason Conrad, superintendent Darrell Lee and office engineer Peter Mercuris.

- Materials and equipment suppliers Guntert Steel, Merchants Metals, Hertz Equipment, Hilti, Cable Moore and Power Engineering.

- The NAFCO crew, comprised of Oscar Amezcua, superintendent;



**High in the sky, NAFCO crew members install structural steel to aid in the support of the fabric.**

Josh Butterfield, assistant CM; Juan Amezcua, foreman; and erectors Jed Goddard, Juan Lopez, and Jassiel Llamas; office manager Mary Vargas; Kira Comini, NAFCO's branch manager, and Gary Thompson, CEO of

United Fence Contractors (UFC).

NAFCO is located in Oakland, Calif. and is part of United Fence Contractors. UFC is one of the largest installers of perimeter security solutions in the U.S., and specializes in large commercial fence and gate automation projects.

For more information on NAFCO, call 510-436-0755 or fax 510-534-5405. To learn more about UFC, call 510-276-5376 or fax 510-276-7530. Also visit the web site [www.unitedfencecontractors.com](http://www.unitedfencecontractors.com).

For more information on Merchants Metals, which supplied the chain link fabric and other materials, call 866-888-5611 or visit the web site [www.merchantsmetals.com](http://www.merchantsmetals.com).

Merchants Metals is one of the largest manufacturers and distributors of fence systems in the nation.

## CONTROLLED PRODUCTS SYSTEMS GROUP

The Nation's #1 Distributor of Gate Automation Products  
with a distribution center near you...



**CPSG offers you:**

- 6 million dollars of available in-stock inventory • Representation of over 100 Industry manufacturers
- More technical support staff than any other distributor in the Industry • Unparalleled field support
- Industry leading RMA and warranty processing system • New product introduction and training seminars
- Competitive pricing for LARGE ACCOUNTS and VOLUME ORDERS

Call us today to discuss your needs - even with equipment that has already been installed. From job specifications, to product selection, to installation guidance and technical support, CPSG is ready to help!

**Contact your local CPSG branch manager today:**

<b>Albuquerque, NM</b> 888-344-3501 Steve Pina	<b>Atlanta, GA</b> 800-281-5769 Ned Phillips	<b>Austin, TX</b> 512-912-9403 Wes Aylor	<b>Charlotte, NC</b> 866-823-8101 Sean Karleski	<b>Corona, CA</b> 800-622-5335 Tony Gillett	<b>Dallas, TX</b> 866-382-5600 Lance Howard
<b>Denver, CO</b> 800-642-2249 Cary Ruark	<b>Escondido, CA</b> 800-373-7514 Christy Etchepare	<b>Ft. Lauderdale, FL</b> 866-327-1231 Dean Brown	<b>Ft. Worth, TX</b> 817-595-8905 Kevin Wrembelski	<b>Houston, TX</b> 800-282-8571 Stephen Hogan	<b>Las Vegas, NV</b> 702-212-6500 Gary McKee
<b>Los Angeles, CA</b> 310-217-0675 Darren Avant	<b>Nashville, TN</b> 615-244-2131 Jon Miller	<b>N. Hollywood, CA</b> 800-700-5754 Esmeralda Lozano	<b>Orlando, FL</b> 877-676-4283 Rob Hobbick	<b>Phoenix, AZ</b> 602-426-8065 Jason Krenke	<b>San Antonio, TX</b> 866-989-3800 Russell Stevens
<b>Seattle, WA</b> 877-275-4223	<b>Salt Lake City, UT</b> 801-972-3030 Brian Powell				

CPSG....Your partner in Access Control  
[www.controlledproducts.com](http://www.controlledproducts.com)



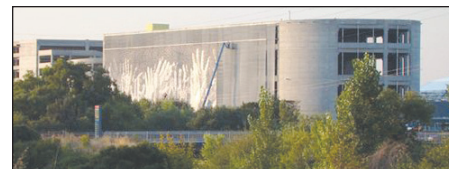
**NAFCO crewmen Ricky Gonzalez and Oscar Amezcua drill holes for 3/4" x 7" S.S. Hilti anchors to mount the support plates for the 6-5/8" horizontal rails.**



**NAFCO workers install the first of the 3/8" x 9 ga. wire mesh panels.**



**NAFCO superintendent Oscar Amezcua (left, in yellow safety vest) and assistant project manager Josh Butterfield (right, in yellow safety vest) oversee the installation along with Hensel Phelps Construction Company engineer and QC personnel.**



**Work progresses on installation of the fabric on the east façade of the "monster garage."**